



Parish Magazine

March 2022



March Hares, Chalke Valley

Photo by Andrew Wiltshire

countrysidephotography.org

STaB is published by the Parochial Church Council and delivered free of charge to every home in Stratford Tony and Bishopstone. We hope you find it interesting and informative. **Donations towards publication costs are always welcome.**

Donations should be made payable to Bishopstone Parochial Church Council and sent to: The Treasurer, Bishopstone PCC, Ebble Cottage, Mill Lane, Bishopstone, SP5 4BG. Please state on a cover note that it is for STaB.

The views in this magazine are not necessarily those of the PCC.

Editor: Kate Pendlenton: 780655

Editorial Team: Robert Pendlenton 780655

Cally Edwards: 780079

Email: **teamstab2019@gmail.com**

Advertising

Sarah Brough: 07825 442110

E.mail: **stabads@outlook.com**

Any articles for inclusion are to be submitted by 5pm on the 20th of the month to appear in the next issue - *unless the magazine is already full.*

The editors reserve the right to edit all contributions.

As Spring approaches, we find ourselves looking forward to events later in the year, notably the Queen's Platinum Jubilee celebrations. We are hoping to produce a special issue of STaB in June to mark this, so please do let us know your stories of meeting Her Majesty the Queen if you have done so (see p10). Cllr Simon Williams is also looking for volunteers to help with the planting of trees to form part of the Queen's Green Canopy (see p5) so don't forget to get in touch with him if you'd like to offer help.



Garden Birds - James Thompson

A warm welcome to Bishopstone and Stratford Tony...

Lucie and family, who have moved into Faulston in Bishopstone. We hope you will all be very happy here.

Please let us know if you know of anyone who moves into the parish so we can offer them a welcome in STaB.



Hello from the Revd Canon Jenny Taylor



March brings Lent and all that that season entails! If you are taking something up or letting something go over these next six weeks may it go well for you! I always think these 6 weeks are rather a gift to us – they give us permission to read, to pray to just “be” rather than rushing around being busy, busy, busy!

Having written that, do please read our Lent leaflet and see all that is going on – we really hope you can attend one of our coffee mornings in aid of Salisbury Women’s Refuge – if you can’t come it is still very, very easy to donate – all the details are in this edition.... a HUGE thank you in advance for your generosity in giving a mother and child a chance to be “at home for now”!

Did you know that in the early church Lent was used as a time when those who felt they were not part of the church or who had become estranged from it undertook a process of reconciliation? This culminated in sumptuous celebrations on Easter Day when they were formally welcomed back into the fold by the whole church community.

If you feel church is not for you, maybe this Lent you might begin to question that thought...church is absolutely for **everyone**... no matter who... if you are a regular, if you are a returner, if you are a “never been before-er” a warm welcome awaits each and everyone of you – go on give it a try!!

Chalke Valley Team Ministry - Parish of Bishopstone and Stratford Tony	
Team Rector:	The Revd Catherine Blundell 01722 780134
Team Vicar responsible for Bishopstone and Stratford Tony:	
	The Revd Canon Jenny Taylor 01722 503081
Church Wardens:	George Brutton 01722 718539 Sarah Seal 01722 780305
Lay Pastoral Assistants:	Sally Leaver 01722 780447 Sheila Nell 01722 781120
Team Administrator:	Emily Broomhead 07890 262376
	thechalkevalleychurches@gmail.com

The Friends of Bishopstone Church

If you would like to help the Friends of Bishopstone Church with their work of preserving the fabric of this beautiful building, please contact the Treasurer Norman Barter (01722 780471).

Church Notices

**The Parish of Bishopstone and Stratford Tony
ANNUAL PAROCHIAL CHURCH MEETING
Sunday 20th March 2022, 10.40am
in St John the Baptist Church
after the 9.30am Parish Communion**

The Church's AGM for everyone living in the parish!
An opportunity to hear what has happened over the
past year and future plans and to ask your questions.

Chalke Valley Churches' 2022 Lent Appeal for



Salisbury Women's Refuge



You are invited to a Bishopstone Coffee Morning
10.30am - 12 noon

Friday 1st April at Croucheston Cottage, The Cross

Contact Alix Ricketts 780320

or

Friday 8th April at 22 The Croft

Contact Sally Leaver 780447

If you are unable to come, but would like make a donation, the
leaflet in STaB tells you how to do it



Parish Council

BISHOPSTONE ANNUAL PARISH MEETING BISHOPSTONE PARISH COUNCIL MEETING

The Annual Parish Meeting will be held on **Thursday 10th March 2022 at 7.00pm in the Village Hall**. This is separate from the meeting of the Parish Council and can be used by anyone living in the village to raise local issues of current interest for discussion. If you have a matter of concern why not come along and raise it?

As in previous years this APM will include reports by village organisations on their activities over the past twelve months and on current projects affecting the village.

The APM will be immediately followed by the March meeting of **Bishopstone Parish Council**. Notices about this meeting, including the agenda, will be posted on the village noticeboards and on the village website.

Mike Ash
Clerk

We DO Need Your Help!

In February's STaB we asked for help in planting the trees that will commemorate the Queen's Platinum Jubilee in the village. Unfortunately, this did not produce a big response. We need volunteers of any age, but particularly younger people, to help dig holes and plant the thirty trees that will be arriving soon. Detailed arrangements will be made once we know who is available.

So please get involved - contact Cllr Simon Williams on 01722 780905.

The Queen's Green Canopy is a unique tree planting initiative, created to mark Her Majesty's Platinum Jubilee in 2022, which invites people from across the United Kingdom to "**Plant a Tree for the Jubilee**". Tree planting will create a legacy for future generations to enjoy and help in the battle with climate change.

Bishopstone Parish Council



Village Hall



March 2022

LATEST COVID ADVICE:

As the pandemic is still with us we ask everyone to wear face-covering when moving around the Hall, especially when it is crowded.

There will be extra ventilation to reduce risks so do dress warmly during the winter months. We shall endeavour to keep the Hall at a comfortable temperature but will ventilate areas well beforehand and during any intervals.

We would also remind you not to come to the Hall if you are at all unwell and would recommend taking a lateral flow test before mixing with others, even if you are fully vaccinated.

THREE CIVILISATIONS – A programme of talks by Francis Taylor

FRIDAY 11th MARCH

Discovering the Maya

FRIDAY 1st APRIL

Angkor Wat and the Khmer Empire

Each illustrated talk will start at 7.30pm with the doors opening at 7.00pm.

A bar will be available for drinks.

Tickets cost £5 for each event and bookings can be made by telephoning 01722 780316 or by email at: mail4taylor@gmail.com.

BISHOPSTONE COMMUNITY CAFE

These are normally held on alternate Thursdays. The next coffee mornings will be on **Thursday March 3rd, 17th and 31st. 10.30am until 12.00noon**. Everyone is welcome to look in for a coffee and chat. There is presently no charge for refreshments.

BISHOPSTONE COMMUNITY LUNCHESES

Times as usual: 12.00 noon for 12.30 pm.

Wednesday 2nd March – The guest speaker will be from the Wiltshire Air Ambulance service. (Postponed from January)

Wednesday 6th April – The speaker is Francis Taylor talking about Easter Island. Advance booking is essential. Please telephone Caroline Ash on (01722) 781044 and advise her of any dietary requirements. The cost is £7.50 for a two-course lunch and a drink.

MOVIOLA at Bishopstone

Friday 25th March "Nowhere special" When John, a thirty-five-year-old window cleaner is given only a few months to live, he attempts to find a new, perfect family for his three-year-old son, determined to shield him from the terrible reality of the situation. **Future showing: 22nd April "Stillwater"**

Doors open at 7.00pm with the film commencing at 7.30pm

Advance booking is essential. Tickets are **£6.00** and are available from Caroline Ash on (01722) 781044. A cash bar with snacks and ices will be available.

FUTURE EVENTS

Monday 16th May - The Village Hall Annual General Meeting

7.00 for 7.30pm

Friday 3rd June – Jubilee Fair

Our Spring Fair this year will be replaced by a Jubilee Fair from 5.30 to 7.30pm. Proceeds will be donated to a Jubilee charity (yet to be decided).

We hope some local stallholders and craftspeople might once again be interested in joining us to make an event in which the whole village is involved. Watch this space for more info next month!

HALL BOOKINGS FOR SOCIAL EVENTS AND WORKSHOPS

Both halls are available for hire subject to any restrictions in place at the time. To enquire or make a booking, please contact the bookings secretary Margaret Barter (01722) 780471

BABY AND TODDLER PLAYGROUP

The playgroup meets on Friday mornings during term-time from 9.30 – 11.00am. Breastfeeding support is available at the group from Cally Edwards and trained peer-supporters. Due to overcrowding, the playgroup is operating a booking system each week to limit numbers. Find further information on our Facebook page *Bishopstone Playgroup*, or contact Kate Pendleton on 01722 780655 or email < kmpendleton@hotmail.com >.

“EXTEND” EXERCISE CLASSES

For further information about these exercise classes contact Jenny on 01722 780863, email: jennyberwynjones@yahoo.co.uk

PILATES AT BISHOPSTONE

For further information contact Claudine on 07788 587937 or email: claudineblake@aol.com

YOGA WITH HANNAH

For more details please contact Hannah Stocker on 0773 856 1888 or by email: yoga_with_hannah@outlook.com.

SARUM SPINNERS AND WEAVERS

For more detail about the group please contact Les Smith on 01722 780761.

COME AND DISCOVER THREE ANCIENT CIVILISATIONS



(1) FRIDAY 18TH FEBRUARY – **PETRA AND THE LOST KINGDOM OF THE NABATAEANS**

(2) FRIDAY 11TH MARCH – **DISCOVERING THE MAYA**

(3) FRIDAY 1ST APRIL – **ANGKOR WAT AND THE KHMER EMPIRE**

Each illustrated talk will start at 7.30pm.

Doors, and the bar, open at 7.00pm

Venue : **Bishopstone Village Hall**, Netton Street,
Bishopstone, Salisbury, SP5 4AA

Speaker: Francis Taylor

Cost per head for each talk - £5

For further information please call 01722 780316 or
email mail4taylors@gmail.com

Bishopstone Village Hall rates for private hire

Bishopstone Village Hall has 2 rooms that are available for hire for a wide range of functions. The larger room is ideal for children's parties with lots of space for running around. It can also accommodate wedding receptions, charity functions and large family celebrations.

The smaller room (The Memorial Room) is a good size for meetings and smaller gatherings.

The modern kitchen is spacious and fully equipped with an electric catering range, a professional 4 minute dishwasher, water boiler, hot cupboard, microwave oven, 2 fridges and a freezer, all suitable for professional caterers. There is also glassware, crockery and cutlery for over 80 people.

The hire charges include use of heating and electricity.

The rates are currently:

	Villagers	Non Villagers
Hire of both rooms (With full use of the kitchen)	£15 per hour	£20 per hour
Hire of both rooms (With tea making facilities but no other electrical kitchen equipment)	£10 per hour	£15 per hour
Full use of the kitchen <u>only</u>	£10 per hour	£15 per hour
Weddings – per event/day	£150	£250
Parties – per event/day	£100	£150

Broadband

An additional charge is made for use of the broadband connection of £6 per hour with a maximum of £25 per day.

Large projection screen

Use of this professional quality screen is charged at an additional £10 per event.

The hire period must include time to set up and clear away after the event.

For further information and bookings contact: Margaret Barter 01722 780471

Have YOU ever met the Queen?

Have you ever met Her Majesty the Queen? If so, would you be prepared to tell us about it? To celebrate the upcoming Platinum Jubilee, the editors of STaB would like to put together an article for the June edition of this magazine about residents of this parish meeting Queen Elizabeth. We feel sure that there will be some fascinating and possibly unusual or amusing stories that people will be able to tell! We look forward to hearing them.



If you would like to contribute, please either e.mail the editorial team on teamstab2019@gmail.com, or if you do not have access to e.mail then we are very happy to receive written accounts, delivered to Bramley Cottage, Harvest Lane.

Many thanks in advance.

We've been delighted to receive one story about a Bishopstone resident meeting Her Majesty - but we feel sure that there are more to come. Please let us know!

Staying in Touch

STaB magazine is a vital source of communication in the village, keeping everyone informed as to what is happening locally. However, the Covid-19 pandemic has highlighted the fact that situations can change very rapidly. To keep up to date with what is going on there are two other important sources of information in Bishopstone - the village website and our own WhatsApp network.

The village website – www.bishopstone-salisbury.co.uk is updated in real time and carries all the latest news on issues that affect the village.



The Bishopstone Network is a WhatsApp messaging service that has more than proved its worth during the pandemic, and more recently during the storms when residents were able to report fallen trees and blocked roads to the Emergency Planning Officer. Information can be instantly shared to your mobile phone about support services being provided in the village and on a variety of other matters – everything from the length of electricity black outs to what is available from the White Hart take-away service! You will need to download the App to your phone and then contact Piers Edwards (piersgedwards@gmail.com or 01722 780079) or Kate Pendlenton (kmpendlenton@hotmail.com or 07769202200) and ask to be added to the group.

Chalke Valley Community Support

POLICE

Call 999 in an emergency: an emergency is when someone is being threatened or at risk of getting injured, or a crime is in progress.

Call 101 for non-emergencies: such as reporting a crime that has already taken place, non-urgent incident, contacting local officers etc

You can also contact local Police as follows:

PCSO Matthew SMITH – matthew.smith@wiltshire.pnn.police.uk

PCSO Simon WARD - simon.ward@wiltshire.pnn.police.uk

PC James BARRETT - james.barrett@wiltshire.pnn.police.uk

PC Matt HOLLAND – Community Policing Co-Ordinator

CPTSouthWiltshire@wiltshire.pnn.police.uk (*e.mail address for general enquiries*)

Community Messaging – for emailed crime reports and local policing updates, sign up at www.wiltsmessaging.co.uk

Social media – for local policing updates follow us on Facebook

@salisburypolice and Twitter **@SouthWiltsCPT**



Sixpenny Handley and Chalke Valley Practice

Doves Meadow Surgery, Broad Chalke: 01722 780282

Broadchalke Surgery partially reopen for Prescription Collection

Sixpenny Handley Surgery: 01725 552500

www.sixpennydocs.co.uk



MOBILE LIBRARY

The Mobile Library is back in action and will be calling at The Styles in Bishopstone between 1115-1135 on the following Thursdays:

17th March, 14th April, 12th May, 9th June, 7th July, 4th August



**Coombe
Bissett
Stores**

www.coombebissettstores.co.uk

shop@coombebissettstores.co.uk Tel: 01722 718852

OPENING HOURS, SHOP AND POST OFFICE

Mon-Fri: 7am-6pm, Sat: 7am-1pm

**Chalke
Valley
Stores
Broadchalke**

w: www.chalkevalleystores.co.uk

e: info@chalkevalleystores.co.uk Tel: 01722 780998

OPENING HOURS

Shop: Weekdays 9am - 5pm (until 4pm on Saturdays)

Post Office: Monday, Tuesday & Thursday 9:30am- 1:30pm

Chalke Valley Link Scheme

Good neighbour support with transport and other practical help



For residents in our area who are elderly or incapacitated and are unable to use public transport

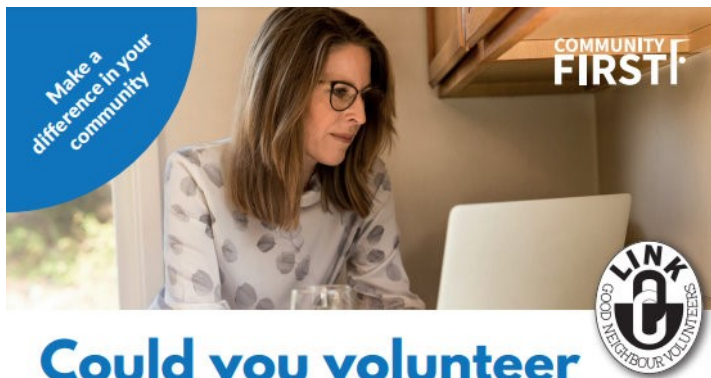
The Chalke Valley Link Scheme exists to provide transport and other good neighbour support in a local, personal and friendly way to members of the Chalke Valley community who need it.

If you live between Bishopstone and Bodenham or Britford and need help getting to your surgery/hospital appointments, local shopping, or to visit family members in hospital, please phone **01722 718780** to reach our Joint Transport Coordinators.

There is no charge but you are invited to make a donation towards our administrative costs. Our co-ordinators are all volunteers and there may be occasions when you will be asked to leave a message which will be answered as soon as possible. Our drivers are volunteers too, so please give as much notice as possible so that we can find a volunteer who is available.

Registered Charity No 1076335

Queen's Award for Voluntary Service



Could you volunteer as a Link Co-ordinator?

Co-ordinators should be outgoing and friendly, have a warm telephone manner, be good listeners and communicators. They will also need to be well-organised. A Link Scheme Volunteer Co-ordinator will typically operate from home, receiving requests from clients or other services. A telephone with voicemail and in some schemes, a laptop will be provided.

Volunteer with your local Link Scheme:

Demand for our service is growing and we urgently need new Link Co-ordinators to support the service



Volunteer from home

If you could spare some time, or for more information please contact us: **01380 722 241**

Email: linkproject@communityfirst.org.uk

VOLUNTEERS NEEDED!

Your local Link Scheme needs you:

Demand for our service is growing and we urgently need new volunteers to support the service

YOUR MILEAGE PAID

If you could spare some time, or for more information please contact us: **01380 722 241**

Email: linkproject@communityfirst.org.uk

Salisbury Foodbank

This month we had 4kgs of donations, plus £10.

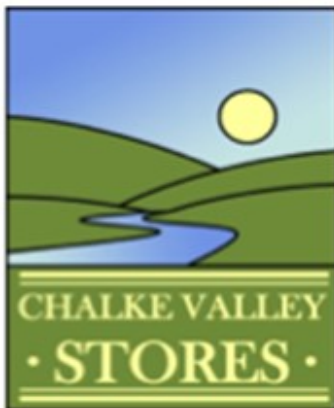
As I mentioned sometime earlier in the year although our Foodbank is still part of The Trussell Trust, if you want to donate specifically to Salisbury by cheque or standing order your donation must be made out to SALISBURY FOODBANK or it will go into the Trussell Trust Head Office pot and be sent to wherever is in most need.

Please continue to support this very worthy cause. You can donate food at most of the supermarkets now but I am still happy to take along anything that is brought to me here at home, or left in our lovely church.

This month they are particularly asking for donations of **Toilet Rolls**.

Best wishes,

Judy Barrett (01722 780306)



AGM: Our Annual Members' Meeting this year is on Monday 21st March at Bishopstone Village Hall starting at 7.30pm.

Delivery service: We are still offering a free delivery service to our local customers who are isolating. Please call the hub to discuss the availability of times for delivery.

Safety in low numbers: Our 'safety in low numbers' protocols continues in the shop – and, yes, sometimes it's a nuisance to queue, but we need to maintain this even more now to protect our staff, as well as you, the customers. Thank you for your continued support.

Thank you to our Volunteers

We are delighted to report that despite some of our staff and volunteers currently having to isolate or shield, we are able to remain open for all our normal hours. This is only possible thanks to the amazing dedication of the remainder of our team, taking on extra shifts. We can't thank them enough!

If you'd like to volunteer please speak to Tony at The Hub.



SPORTS SCENE – March 2022

Facilities for all the Chalke Valley

It has been great seeing the new basketball equipment being well used and the basketballs returned to the storage net ready for the next family to enjoy. Thank you.

We hope that March will see us finalise arrangements for our next major project. Funds are already in place following a successful grant application last year from Wiltshire Council, but we put on hold awaiting improved weather. Watch this space for full details.

We are also now working hard to put a scheme together for replacement floodlights for the Multi Sports Court. Applications for grants have been submitted to a number of organisations as we need to raise £17,000. The lights are 20+ years old and have reached the end of their economic life. Replacement parts are increasingly difficult to get hold of as they are no longer made. The lights themselves are not as efficient as modern units and, with the price of electricity rocketing, we need to reduce running costs. One exciting part of this is to work with the Cranborne Chase AONB and their International Dark Skies Reserve Project Officer to see if we can reduce the impact of sports floodlighting in the Reserve.

With the night's drawing out and weather improving, we will be providing a second set of football posts for the youngsters to come and enjoy a kick about on the sports field. If you are looking for a great healthy birthday party, why not hire us for a 5V5 party?

The new Thursday afternoon 2.00-4.00 short mat bowls session has now started, new players are very welcome, and the Monday evening session takes place as normal. Petanque will be looking to move back outdoors on Friday evenings later in the month. Tennis mix-ins continue Sunday mornings and Thursday evenings, and the Club will be competing in the Salisbury Sarum and Shaftesbury Leagues and are looking for new players. Pickleball takes place Wednesday evenings on the outdoor sports courts, and table tennis is on Sunday evenings. If you are interested in playing Table Tennis during the daytime, please contact Tom at the table tennis club.

Cricket will be starting in May.

We also welcome the Chalke Valley Play School on a Tuesday afternoon.

General e.mail: info@chalkevalleysportscentre.co.uk

More details can be found on our website: www.chalkevalleysportscentre.co.uk

Storm Eunice

Storm Eunice blew in on Friday 18th February bringing widespread damage and disruption. Wind speeds in the village were not quite as high as experienced elsewhere; the highest recorded at the Flamstone Farm Weather Station was 60mph. However, it was enough to bring down trees which blocked roads and footpaths and cause damage to fences, walls and roofs. Across Wiltshire the Highways Team dealt with more than 600 calls for assistance. Within the village our Emergency Planning team swung into action, with fallen trees removed in Church Lane, Mill Lane and a footpath in Flamstone Street. Thanks go, in particular, to Piers Edwards (our Emergency Planning Officer), Michael Pratt and Caspar Edwards.

Mike Ash



This event highlighted the usefulness of the Bishopstone Network village WhatsApp group. Please see p10 for details of how to join.

Church Electoral Roll

If you would like to be entered on the Church Electoral Roll please contact Anne Stutchbury on 01722 780339 or annewheelwright@gmail.com before 3rd March. If you are already on the Roll you don't need to do anything.



PARISH OF _____

APPLICATION FOR ENROLMENT ON THE CHURCH ELECTORAL ROLL

Full name _____

Preferred title (if any) _____

Full address _____

Postcode _____

Email Address (optional) _____

1: I declare that (please tick only one box from options A or B)

1A I am baptised, am a lay person, and am aged 16 or over

1B I am baptised, am a lay person, and become 16* on _____

**Those who become 16 in the next twelve months may complete the form and become eligible to be entered on the roll on their sixteenth birthday.*

2: I declare that (please tick only one box from options A, B or C)

2A I am a member of the Church of England (or of a Church in communion with the Church of England) and am a resident in the parish.

2B I am a member of the Church of England or of a Church in communion with the Church of England, am not resident in the parish, [but have habitually attended public worship in the parish during the preceding six months] [and would have habitually attended public worship in the parish during the preceding six months but was prevented from doing so because _____].

2C I am a member in good standing of a Church which is not in communion with the Church of England but subscribes to the doctrine of the Holy Trinity, am also a member of the Church of England [and have habitually attended public worship in the parish during the preceding six months] [and would have habitually attended public worship in the parish during the preceding six months but was prevented from doing so because _____].

**If you tick 2B or 2C in circumstances where a new Roll is being prepared, you must delete either the first set of words in square brackets or the second set. If you delete the first set, you must complete the second set by filling in the space at the end. see Note 3 for further information.*

I declare that the above answers are true and I apply for inclusion on the church electoral roll of the parish.

Signed: _____ Date: _____

Notes

General matters

- 1 The only Churches at present in communion with the Church of England are other Anglican Churches and certain foreign Churches, as listed in the Supplementary Material to the Canons (but note [Rule 83\(3\)](#) of the Church Representation Rules, which provides for any question as to whether a particular Church is in communion with the Church of England to be decided by the Archbishops of Canterbury and York acting jointly).
- 2 Membership of the electoral roll is also open to members in good standing of a Church not in communion with the Church of England which subscribes to the doctrine of the Holy Trinity where those members are also prepared to declare themselves to be members of the Church of England.
- 3 Every six years a new roll is prepared and those on the previous roll are informed so that they can reapply. If you are not resident in the parish but were on the roll as a habitual worshipper and have been prevented by illness or other sufficient cause from worshipping for the past six months, you should complete declaration 2B or 2C as follows –
 - (a) delete the first set of words in square brackets and
 - (b) at the end of the second set of words in square brackets, briefly state the reason for not having worshipped as mentioned.
- 4 If you have any problems with this Form, please approach the clergy or lay people responsible for the parish, who will be pleased to help you.
- 5 In this Form 'parish' means ecclesiastical parish.

Use of email addresses and other personal data

- 6 You do not have to provide an email address on this Form. If you do provide one, the Parochial Church Council and the electoral roll officer are entitled to use that email address to communicate with you in connection with the maintenance or revision of the Roll or the preparation of a new Roll or with elections to or membership of the Council.
- 7 The Church Representation Rules impose certain requirements for your name and address to be given to a third party, such as the diocesan electoral registration officer, in connection with elections to or membership of a deanery synod, diocesan synod or the House of Laity of the General Synod. If you provide an email address on this Form, it will be given to the third party along with your postal address.
- 8 A third party to whom your name and address have been given under the Church Representation Rules is in certain cases required by the Rules to pass them on to another person, such as the presiding officer in a synodical election. If you provide an email address on this Form, that email address will be given to the other person along with your postal address.
- 9 Any person to whom your email address or other personal data is given under the Church Representation Rules is required by those Rules to hold the data securely. Furthermore, if you do provide an email address on this Form, that does not give anybody the right to use it for any purpose other than those permitted by the Rules; so it cannot, for example, be used for social matters or fund-raising.
- 10 The roll is published after each annual revision and after the preparation of a new roll. The published roll will include your name (as well as the name of every other person on the roll) but none of your other personal data (as defined by the Data Protection Act 2018) will be made public as a result of your inclusion on the roll.

Bishopstone Ultrafast Broadband Update



One of the questions we have been asked is - "Do I really need faster speeds?"

While it is obviously a matter of personal preference, there are parts of the village to be covered by FTTP that have very poor download speeds at present. So it certainly makes sense for them to upgrade when Ultrafast Broadband arrives.

For others who may have a reasonable speed - lets say about 25-30 Mbps download speed - there are reasons for them to consider the logic behind having a much faster service. So here are some thoughts.....

First and foremost, technology advances. In recent times programmes that were not available a few years ago now abound. Computer processors are now much faster in processing data, therefore programmes themselves are becoming even more complex. In effect data increases to fill capacity.

Anyone buying a new TV these days will have a choice of sets with up to 4K HD resolution that can produce pin-sharp pictures. Online entertainment services are usually standard on all new sets giving a choice of Netflix, Sky services, AppleTV, Amazon, iPlayers and a myriad of other services. They all have one thing in common - **they require a decent download speed.**

Films are now readily available to download and watch at leisure and we are sure that in our Covid times many folk have subscribed to such services. The clarity of pictures is subject to constant improvement. For instance a 4K definition service requires at least a 25 Mbps connection. The faster your download speed the quicker the time it takes to capture the film.

Meetings or any form of social engagement on the internet is a daily reality and the quality keeps getting better. So - in a nutshell - faster download speeds will help. More and more operating systems are being added to the internet. For example, property security checks/alerts are available rather than the old type of burglar alarm and they enable you to answer or see who is around your property while you are away, heating and lighting system controlling are also things that are with us now.

As already said some parts of the village do have very slow speeds and UFF will definitely change that. In our return to Openreach the slowest recorded speeds were in the order of 10 Mbps.

Finally, it is worth noting that estate agents also consider that installed ultrafast broadband adds value to a property.

Some of you may not be aware of Salisbury's status as a "fibre city". Though we are not currently directly connected to Salisbury, our signals come from Wilton, via Broadchalke this is likely to change with the introduction of FTTP.

Next Month we will try and cover:

Salisbury - the Fibre City and the end of copper cabling plus a project update.

Want more information?

Visit our website: www.bishopstone-ftp.uk

If you can't find out what you want to know there then please contact any of the project team:

Toby Mills: 781168 toby.mills@bishopstone-ftp.uk

Roger Stockton: 780346

Mike Ash: 781044

Paul Mildred: 780361

Seasonal Poetry

Thanks to Josie Claxton for sending us some poetry from her friend, the late Diana Heel, who lived in Salisbury.

Snowdrop

Enchanting clusters on the slope
Bring each year eternal hope
On slender stem
Comes this sweet gem
In defiance grows
However deep the snows
Tender white purity
Bowed in humility
My spirit is lifted
And consciousness is shifted
Conveying the power
Of this small flower



Photo by Rob Pendleton

Chalke Valley Flower Club

If you're not aware of our club, do please read on!

We are a group of enthusiastic flower arrangers who also organise outings and talks on subjects connected with flowers and gardening. Our members come from a wider area than just the valley and we actively welcome everyone. Of course, we've had to put everything on hold for a while but now our meetings have restarted and we're looking forward to greeting old friends and new faces. As well as our interest in flowers we believe that our events need to be sociable so a coffee, chat and some fun are included. Give us a try in March, come as a guest and see if you like it.

Our March meeting welcomes Michael Bowyer MBE who will give us a demonstration "Herald the Spring". Local expert Michael is the Creative Director of Flowers at Salisbury Cathedral, President of the National Association of Flower Arrangement Societies, a National Judge, Demonstrator, Speaker and Teacher, so we have a rather special opener for our new season.

CHALKE VALLEY FLOWER CLUB

Herald the Spring

Flower Arrangement Demonstration

Michael Bowyer MBE

Broadchalke Village Hall

Wednesday 23rd March 7.00pm

Guests £6



Overview of 2022 Programme of Events

April 27th – Flower Arrangement Demonstration.

May 25th – Outing to Sculpture by the Lakes, Pallington, Dorchester.

June 22nd – Flower Arrangement Demonstration.

July 27th - Outing to Heale House, Woodford Valley.

August 24th – Illustrated talk on China visit.

September 28th – Flower Arrangement Demonstration.

October 26th – Flower Arrangement Demonstration.

We are looking forward to greeting you. If you have any questions phone Liz Long at 780448 or message chalkevalleyflowerclub@btinternet.com

Police Bulletin

A new monthly newsletter from Philip Wilkinson, Police and Crime Commissioner for Wiltshire.



As your Police and Crime Commissioner, I appreciate that not everyone uses social media, so I have asked the many parish and village councils in the county if I can use your newsletters to let you know what is going on and what my office and the police are doing to keep you safe.

In my many meetings with our MPs, councillors and you, you have highlighted your concerns and set the priorities that myself and the Chief Constable will deliver in my Police and Crime Plan.

This plan, should it be endorsed in early March by the Police and Crime Panel, has been informed by you and what you have told me.

Your concerns relate to anti-social behaviour in all its guises; drug abuse and the violent crime that drug abuse drives; rural crime to include fly-tipping, poaching and hare coursing; speeding and road safety; on-line scams, child grooming and bullying; violence against women, girls, children and vulnerable people, and burglary. And your most prevalent complaint was that the police response to your concerns and complaints were rarely effective or timely.

The focus of my plan will not only be on crime prosecution but also early engagement, prevention and education and perhaps even more important, victim and witness support.

I have been working with the Chief Constable and we will deploy the additional 62 officers the government has awarded us to counter those threats that you have prioritised.

Half of those additional officers will be deployed to counter those specific threats above and the remainder to boost your neighbourhood police teams in order to improve the response that you receive. More detail will follow with each of my briefs.

If you have any concerns you can contact my office on pcc@wiltshire.police.uk or wish to report a crime please contact 101 or 999 in an emergency. And if you wish to remain anonymous on Crimestoppers on 0800 555 11.

Local Charity News and Events

'A Year and a Day in the Chalke Valley' - Saturday 19th March, 7pm Ebbesbourne Wake Village Hall

Libby Dineley of Berwick St. John will be showing her beautiful slides of our countryside through the seasons and Richard Trahair will read extracts from her entertaining journal 'A Year and a Day'. Tickets £7.50 (adults), £3.50 (under 16s) and donations for drinks, in aid of St. Mary's Church, Alvediston. Please book with Bidy Trahair (780666 / biddytrahair@gmail.com) and pay at the door. All welcome. Copies of Libby's journal and some of her postcards will be available to buy.

CRESS AFRICAN THEMED FUNDRAISING EVENING

CRESS UK is hosting an inspirational African evening of information and anecdote, sharing African refugee stories by Zoom, highlighting the life changing impact of CRESS funding.

This event will take place on **Saturday 23rd April (7pm-10pm)** at Coombe Bissett Village Hall.

Tickets cost £20 per person for a relaxed supper, including glass of wine, suitable for all diets. African themed dress optional.

Supported by NFU Mutual Wessex. Funds raised will go towards the much-needed agriculture vehicle and salaries to maintain CRESS support for the South Sudanese refugees in northern Uganda.

CRESS' vision is to enable the refugee community to become self-sufficient, now whilst in exile and eventually on their return to South Sudan. The emphasis for CRESS is on long-term development based on continuing personal contact.

You can buy tickets via the website, here: <https://cressuk.org/shop/>

Or, alternatively, tickets can be purchased from Coombe Bissett Post Office or Broadchalke Hub.



The Stars Appeal Walk for Wards is BACK at Wilton House on Sunday 3rd July!

The walk, which is free to enter, offers 3k, 5k and 10k routes around the beautiful Wilton Estate and includes lunch and admission to the grounds of Wilton House. Walkers must sign up in advance and pledge to raise at least £20 sponsorship which they can choose to benefit the ward or department of their choice at Salisbury District Hospital. All participants wear special signs to show which ward they are supporting or to dedicate their efforts to a loved one. To take part in Walk for Wards sign up at www.starsappeal.org or telephone 01722 429005 for an entry form.



Charity Coffee Morning

9th April 2022 10am-12pm

The Old Malthouse, Bishopstone, SP5 4AF

On Saturday 14th May, Madeline and her sister-in-law, Louise, will be taking part in The Moonwalk London Charity Walk, walking 26 miles overnight in a bra!

Coffee, tea and cakes with books and bric-a-brac
Edible donations welcome.

Please join us! For those who won't be able to but would like to donate,
please see our fundraising page

<https://walkthewalk.enthuse.com/pf/the-blister-sisters-96>

For more information, contact Madeline 01722 781 258

Recipe of the Month - Wild Garlic Mayonnaise

Ingredients:

90g wild garlic, 450ml rapeseed oil, 3 egg yolks, 1 tsp English mustard,
2 tsp white wine vinegar, salt and pepper.

Method:

First make the wild garlic oil for the mayonnaise: Rinse the wild garlic, then blanch for 30 seconds in a pan of heavily salted, boiling water. Drain the water and plunge into some iced water, then pat dry with some kitchen towel .

Chop the wild garlic roughly and add to a blender, then pour in the rapeseed oil. Start blitzing on a low speed, then increase in speed for 30 seconds to 1 minute, until the oil is a bright, vibrant green colour.

Pass through a fine sieve, then through a sheet of muslin or a coffee filter. Keep in the fridge until needed.

Whisk the egg yolks, mustard and vinegar in a bowl until smooth. Continue whisking and pour in a thin, steady stream of the wild garlic oil.

Keep whisking and pouring until all of the oil has been absorbed and has emulsified with the egg mixture - you should be left with a nice, thick green mayonnaise. Season with salt and pepper and serve.

Nature Notes - Mad March Hares

With its distinctive long ears and legs the brown hare is a reasonably common sight on the downs above Bishopstone, despite the fact that brown hares in the UK have decreased by up to 80% in the last century. They are certainly more elusive than their rabbit relatives and have quite different habits. For example, hares do not burrow underground. Instead they crouch in 'scrapes' which are small dips in the earth. This gives hares the optical illusion of simply disappearing when they run when in fact they have just dipped down into a scrape. This may be where the association between the Easter Bunny and her eggs comes from. Ground-nesting birds, such as lapwings, were common before intensive farming techniques. When hares 'disappeared', ancient people would reach the site and find the egg of a ground-nesting bird which they believed to have been left by the hare.

Brown hares are famous for their energy and speed. In fact they are Britain's fastest land mammal. They are particularly active in March when they can be seen 'boxing'. March is mating season and males (bucks) seek out any females (does) that have come into season. When a male is being too persistent with a female, he chases her across fields in an attempt to mate and when she's had enough, she'll turn around and give him a good punching!

You are most likely to spot hares at dawn and dusk, out in open fields, farmland and woodland edges. You are also much more likely to see them at this time of year, during the mating season.

It's also worth being wary of where you step as some leverets (baby hares) are born as early as March and often appear in fields looking as though they have been abandoned. Please don't touch them as this will leave your scent on them, which may lead to abandonment.

Rob Pendleton



Running Hare

*Photo by Andrew Wiltshire
countrysidephotography.org*

In Our Night Sky - Saturn

Saturn, to many the most inspiring planet, is the second largest planet in the Solar System. It is visible to the naked eye on a clear night, but not at the moment as it rises in our daytime. Through binoculars and my small telescope it is clearly a disc, but fuzzy. A good telescope with an aperture of at least 70mm is required to see the rings, preferably astronomic as these have one less lens, hence less distortion of the image by imperfections in the glass, but the image is then produced upside down.

At 1/3 the mass of Jupiter, Saturn is still massive and the latest theory indicates that it had a restraining influence on Jupiter in the early Solar System, its gravitational field pulling Jupiter away from Sun and stopping it from swallowing all the inner planets and enabling Earth to survive. As the second so-called gas giant, it has the same composition as Jupiter (9:1, hydrogen: helium), but its density is the lowest in the SS at less than that of water.

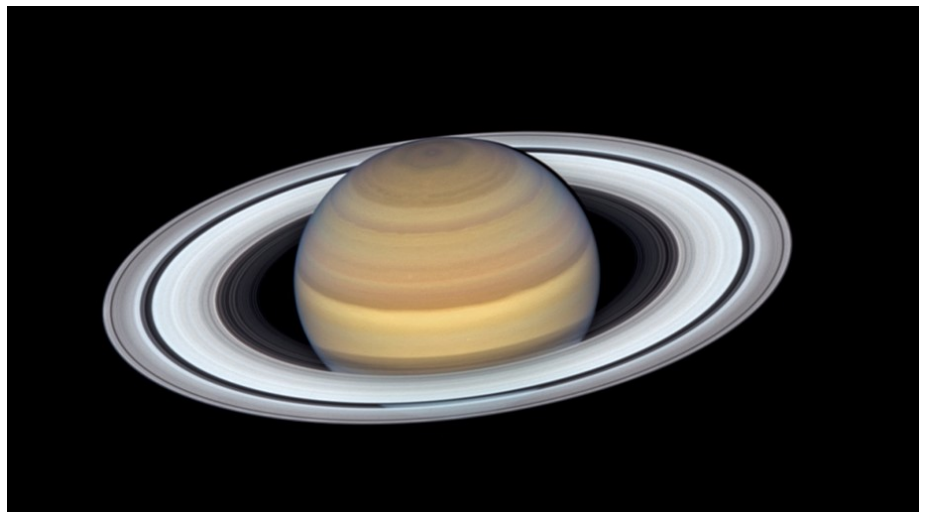
Saturn's rings, which extend to 175,000 miles, but only 10m deep, are mostly chunks of water ice, thought to be from comets, asteroids, or shattered moons that broke up before they reached the planet, torn apart by Saturn's powerful gravity. Whilst they are held in place by centrifugal force and mini-moons, some within the rings as well as outer moons, the chunks are slowly falling towards and being absorbed into the planet at a rate of around 1.5 tonnes per second.

As with Jupiter, the core contains metallic hydrogen, but 2021 calculations indicate that whilst the helium is metallic and uniformly mixed close to core, at lower pressures further out, in a significant part of mantle, it behaves like rain. This explains why Saturn's magnetic field has almost perfect alignment with its axis of rotation (closest of all planets).

It has a massive aurora, visible only in ultra violet light, caused by excitation of hydrogen atoms.

The thin atmosphere is a swirling mass of hydrogen with small amounts of helium, methane and ammonia, banded as with Jupiter by its speed of rotation of less than 11 hours.

Chalkey D



Saturn from Hubble telescope

Rambling with Jazzie Again

Well, after her close trim, Jazzie's coat is growing back well, and the original black and grey colours are returning. She still has her fine white chest and her white beard is reappearing. We got her a coat, but she refuses to wear it. Perhaps it itches her growing coat, so we have given it up now. Jazzie seems fine and enjoys all her walks. She never met the thatcher's dog, but they chatted over the wall! She was very impressed with the owl finish to the excellent thatch at Faulston House. The Master Thatcher and his team have done a really good job on the barn, well supervised by the wee dog.



We did the Garden Birdwatch at the end of Jan, but were disappointed that we noted so few in the garden. However, all the hedges are full of birds, who are also making good use of our feeders.

Jazzie has met even more new four-legged friends and more children, and is having a great time with them all. She can even sit for a little while to say Hullo!! The weather seems to be ever changing, and quite mild for February, but we hope no more frosts will hit us. No blossom yet, but snowdrops and daffodils are appearing and there are plenty of buds on the trees and shrubs. Hedges are being cut all over the place, and fruit trees pruned, as we begin to get into the garden again. A good harbinger of things to come.

Did I say good things to come? Well, what a gale Eunice gave us! No damage here, but Jazzie quite perplexed by all the noise, but enjoyed being in the garden to listen to the wind and chase the pigeons and the squirrels! Went for a walk on Friday, and nearly got blown away for our troubles, so it was very short.



Took a longer walk earlier this week, but Jazzie decided she wanted to go home at Faulston Barns, so off we went up the track, then down over the fields to the ford and into the water-meadows, and on to Pitts Lane and home. A good walk for us both and another chance to enjoy the wonderful view of the village. The winter wheat is showing well, so bright and green in the otherwise brown and wintry fields. After the gales, we hope for calmer weather and a bit warmer, so all the rest of the spring flowers and buds can get cracking.

Jazzie still gets very excited about dogs or folk passing the house. Every passer-by gets a rousing bark, as do the binmen and the postie! It must be something to do with a little dog, short in leg?!

Thanks to all who we meet and recognise Jazzie from these articles! It is fun meeting and writing these pieces. Keep walking, and let's meet more dogs!!

JT

Sarah's Gardening Tips for March

1. Feed trees, shrubs and hedges with slow-release fertiliser.
2. Prune late flowering clematis (group 3) then feed them.
3. Cut back cornus (dogwood) and willow to benefit from colourful stems in winter.
4. Cut out the top rosette of leaves of mahonia after flowering to encourage branching
5. Feed roses with rose feed or fertiliser as they come into growth.
6. Cut autumn fruiting raspberry cane to the ground.
7. Cut ornamental grasses to encourage new growth.
8. Keep dead heading winter pansies to encourage new flowers.
9. Deadhead hydrangeas before new growth appears. Cut to about one third of last seasons growth.

I love decorating my home. I'm a gardener too, so that's usually something I have to play catch up with.

Suzy Bogguss



Question: Owing to its popular and widely distributed crop, which state is known as "The Potato State"? (Answer on p51)

Sarah's Garden Services: 07971 909 548

Email: mygardenservices@outlook.com

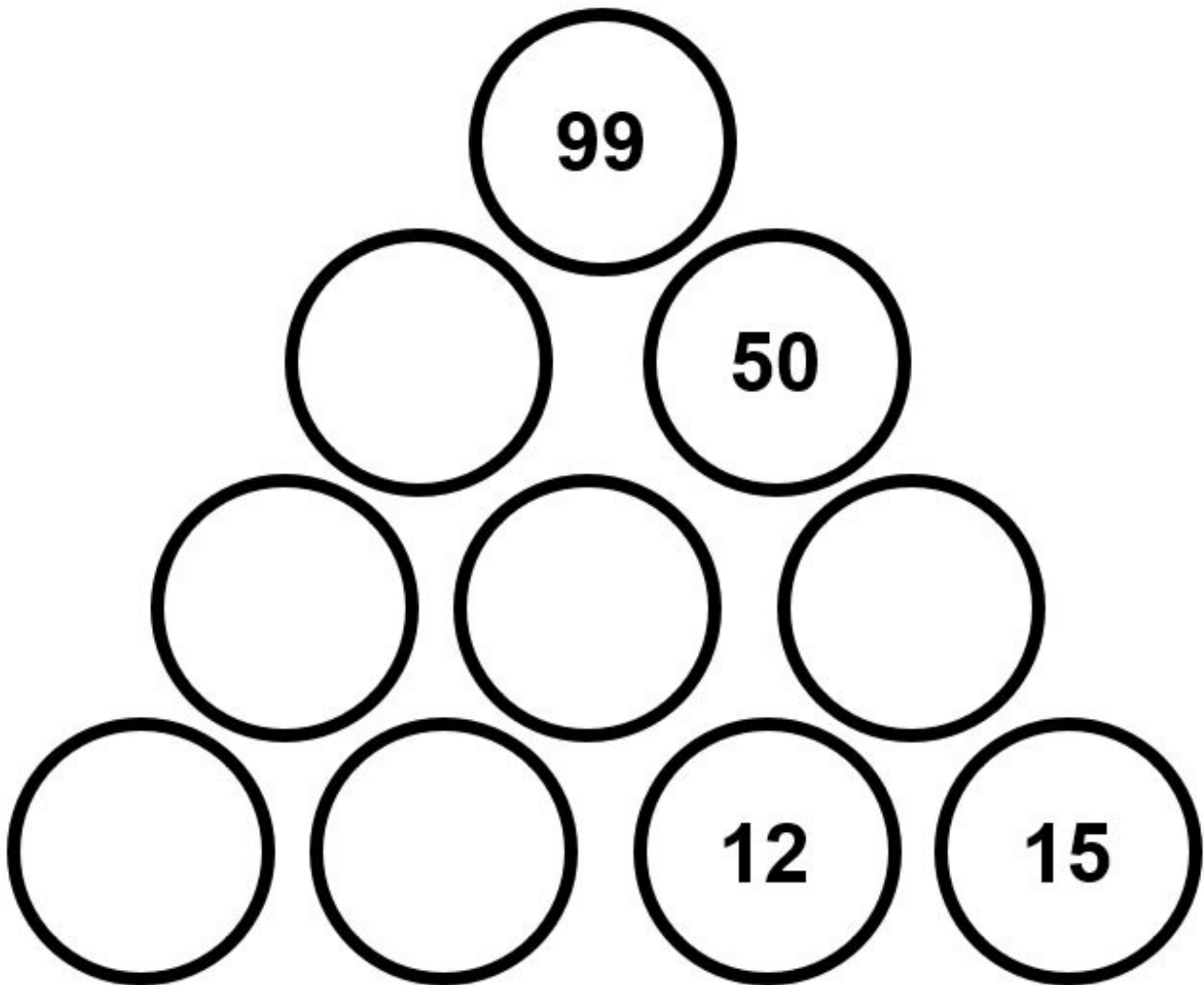
Follow us on Facebook and Instagram @sarahsgardeningservices

Puzzles and Activities

By Cally Edwards

Pyramid Plus

The number in each circle is the sum of the two numbers below it. Just work out the missing numbers in every circle.





Lovely Spring-themed art idea for young children.

Sudoku

		4	8					7
	5				9			1
2					8		7	
	7				6			5
						2	3	
5			4			1		3
	2		3					
	9		1					8

White Hart Take Away Menu

Available Tuesday – Thursday 6pm - 8pm
Friday & Saturday 6pm – 8.30pm

White Hart Southern Fried Chicken Strips, Fries & Coleslaw
£9.95

Beer Battered Cod & Chips £9.95

Battered Halloumi & Chips £9.95

Chicken Madras Curry or Root Vegetable & Lentil Curry with
Rice & Poppadom £9.95
(Add Naan for £1.50)

Steak & Guinness Pie served with Chips, Peas & Gravy £10.95

*6oz Beef Burger - £9.50

*7oz Southern Fried Chicken Burger - £10.75

*Thai Vegan Burger - £9.50

*Foot Long Bratwurst topped with Sauté Onion & Curry Sauce
£10.50

(Additional Toppings 70p – Bacon, BBQ Sauce, Cheddar,
Stilton, Brie, Jalapeno & Scorchers Cheese)

12" Thin Crust Pizza

Margherita

(Tomato Base, Mozzarella, Beef Tomato) £9.95

Seafood

(Pesto Base, Mozzarella, Prawns, Mussels,
Squid, Anchovies, red onion & Black Olives)
£13.95

Italian Meat Feast

Smoked Tomato Base, Mozzarella, Parma Ham,
Salami, Chorizo & Spicy Beef £13.95

Pepperoni

(Tomato Base topped with Mozzarella &
Pepperoni)

Vegetarian

(Tomato Base, Mozzarella, Red Pepper, Red
Onion, Mushroom, Sweetcorn & Black Olives)
£12.95

Indian Pizza (Can be done Vegan)

(Tomato Naan Base, Chicken Tikka, Pepper Dew
Peppers, Onion Bhaji, Mango & Coriander)
£12.95

Add some Sides

Salt n Chilli Pepper Chicken Wing £4

Crisp Polenta Halloumi Sticks £4

Beer Battered Onion Rings £4

Toasted Ciabatta Garlic Bread £3.50

Toasted Ciabatta Cheesy Garlic Bread £4

Chips (Chunky or Fries) £3.50

Cheesy Chips £4

Delicious Dirty Fries

Choose your topping

*Bacon, Brie & Cranberry £6

*Pulled Jackfruit & Vegan Mozzarella £5

*Salt N Chilli Pepper £5

*Bratwurst, Fried Onion & Curry Sauce £6

*Chilli Con Carne, Salsa & Cheese £6

Sunday Roast

Beef £14.95, Lamb £14.95,

Pork £13.95, Veg Nut Roast £13.55

All served with Seasonal Vegetables, Roast Potatoes,

Yorkshire Pudding & Gravy

Sunday Only 12pm – 2pm

Children's Meals £5

Chicken Nuggets & Fries

Sausage & Chips

Fish Fingers & Chips

3oz Burger

(add Cheese 70p)

Mac n Cheese

Choose a side (Included in the price)

*Peas

*Sweetcorn

*Baked Beans

Desserts £4

Cheesecake of the day

Jam Roly Poly

Plum & Apple Crumble

Eton Mess Sundae

Choose from either (Double Cream or
Custard) to accompany your Dessert



THE
WHITE
HART
AT BISHOPSTONE



Giving Peace Of Mind



Call Jessica Johnston
on 01722 410664

St Mary's Chambers, 51 New Street, Salisbury, Wiltshire SP1 2PH
t: 01722 410664 e: mail@sampsoncoward.co.uk
www.sampsoncoward.co.uk



BECAUSE YOUR FAMILY MATTERS ...

You want to protect your family and make sure they are looked after when you are no longer around.

We can help you plan for the future - including supporting you with Wills, Trusts and Lasting Powers of Attorney.



Plus receive a **20% discount** on our standard Wills fees.

Quote Stratford Tony and Bishopstone Magazine

01722 412000
www.parkerbullen.com

NEW Garage (Harnham) Ltd

01722 321 330

Salisbury Original Car Care Clinic
Vehicle wide diagnostics, whatever
the problem, we have the solution

- ◆ All Auto electrical work undertaken.
- ◆ Class 3, 4 & 7 MOTs with Class 1 and 2 available on request.
- ◆ Air conditioning services carried out.
- ◆ Lease work undertaken.



NOW OFFERING PAYMENT ASSIST
Pay just 25% of your bill today
Spread the remaining cost over the next 3 months
NO FEE NO INTEREST NO CATCH



www.newgarageharnhamltd.co.uk

RAC
Approved Garage



National brand, international reach, local knowledge, personable people.

For friendly, helpful, expert advice on your home
please contact your Salisbury Branch.



Fiona Pengelly



Sarah Cull



Maisie Umpleby



Oliver
Custance-Baker



Andrew Cronan

Salisbury Branch

41 Milford Street, Salisbury, SP1 2BP
01722 344010 | salisbury@struttandparker.com



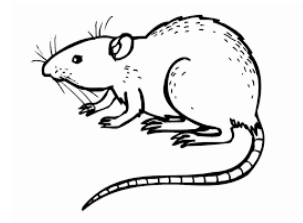


BASED IN FOVANT

01722 714308

07541 358570

- Local
- BPCA trained
- RSPH qualified
- Sensible pricing
- Fully insured
- Reliable
- Discreet
- Evening & weekends



www.greystonespestcontrol.com

michael@greystonespestcontrol.com



THROOPE DOWN CO-WORK

OPEN MID-MAY CALL OR EMAIL FOR FURTHER INFORMATION



About

Modern co-working space equipped with super-fast wifi. Perfect for remote workers, start ups & entrepreneurs looking for a change of scene and a thriving community.



Includes

- hot & fixed desk
- high speed wifi
- meeting rooms
- free carparking
- printing facilities
- free refreshments

info@throopedownco-work.com

www.throopedownco-work.com

+44 7967 588 326

Throope Down CoWork, Blandford Rd, Coombe Bissett, Salisbury SP5 4LN

Coombe Bissett Stores and Post Office

- When the shop is open, so is the Post Office
- Free local deliveries
- Fresh fruit and vegetables daily
- Well stocked with everyday groceries and lots of interesting things to tempt you
- Open Monday to Friday 7:00am to 6:00pm, Saturday 7:00am to 1:00pm, closed Sunday



Homington Road • Coombe Bissett • SP5 4LR

shop@coombebissettstores.co.uk

01722 718852



TATNER and CO

TRADITIONAL AND MODERN UPHOLSTERY

Our bespoke upholstery services include:

Dining Room Chairs	Roman Blinds	Campervan seating and Rock and Roll beds
Arm Chairs (including Parker Knoll)	Curtains	Classic car seating
Outdoor/garden seating cushions	Scatter cushions	Caravan and motorhome seating
Bench seating (kitchen, bar and restaurant)	Box Cushions	Ottomans and storage boxes
Footstools (including made to measure stools)	Headboards	

Contact Michelle Tatner on :

MOBILE : 07968 842525

Facebook : Tatner and Co

EMAIL: tatnerandco@gmail.com



Instagram: tatner_and_co



EBBLESIDE BUILDING LTD

Extensions – Property restoration – Groundworks
Bricklaying – Carpentry – Roofing – Plastering – Tiling
Traditional lime works – listed building works – Kitchens –
Bathrooms

All aspects of building work carried out

Tel: Russell **07463780938**, Campbell **07976438752**

Email: campbell.mcculloch@tiscali.co.uk, russfoss19@aol.com,

Registered in England & Wales No: 11291245

Vat reg no 308159701

Registered office: Ebbleside, Stratford Tony, Salisbury, Wilts, SP5 4AT



For all your foam requirements,
seat pads, sofas, camper vans
and much more...

Upholstery fabrics also available
Just give Katrina a call



07810661000



info@khsoftfurnishings.com



www.khsoftfurnishings.com

**BY APPOINTMENT
ONLY**

Oakley Business Park
Dinton
SP3 5EU

GRAHAM DIMMER MOT CENTRE

MOT Tests on all types of vehicle up to 3,500kg
Servicing & General Repairs on all makes & models
Including **camper vans**
Specialist vehicle diagnostics
Air Conditioning repairs & re-gassing
Electronic Wheel Alignment
Free Courtesy Car

01722 328344

Avon House, Newton Road, Churchfields Salisbury, Wilts SP2 7QA

Email: info@grahamdimmermot.co.uk

www.grahamdimmermot.co.uk

S. WALLWORTH ELECTRICAL SERVICES LTD

FULLY QUALIFIED ELECTRICIAN, EMERGENCY REPAIRS

INSTALLATIONS – RE-WIRES, ELECTRICAL REPAIRS & TESTING

EXTRA SOCKETS & LIGHTING, NIGHT STORAGE HEATING, ELECTRIC SHOWERS

DOMESTIC & COMMERCIAL



FREE QUOTATIONS.

SIMON WALLWORTH

31 DEAN LANE, SIXPENNY HANDLEY

SALISBURY, WILTSHIRE

SP5 5PA

TEL: 01725 552545 MOB: 07826 928759

S.WALLWORTH@HOTMAIL.CO.UK

Sarah's Garden Services

Need help with your garden?



**Weeding, Planting, Mowing, Pond/Greenhouse Cleaning,
Holiday Watering etc**

No job too small!

07971 909 548

mygardenservices@outlook.com

Bishopstone based.

Wessex Contract Services

*Fencing, Landscaping,
Ground Care & Maintenance*

Lee Curtis

Tel: 01722780842

Mob: 07875018317

Email: lee@wessexcontractservices.co.uk



S P Restoration

Antique Restorers

We offer our customers a specialist service in

Antique restoration, French polishing, Veneering, Complete table re-polishing, Wood turning and Desk leather inserts.

We have a fast chair repair service, we offer a collection and delivery service with free estimates. You're welcome to come visit us at our workshop:

Unit 1 St Martin's Workshops
Manor Farm
Fifield Bavant
Broadchalke, SP5 5HT
01722 780584



For all your pest issues, Local, fully insured, fully qualified BPCA Member
Wasps, Rats, Mice, Cluster fly, Clothes Moth, Fleas, Squirrels, Bed bugs
Call now- **07711 259749** Email- **info@wiltshirepestservices.co.uk**



FLAMSTONE LOGS

Air & Kiln Dried Logs for Sale

Various load sizes available

Tree Surgery Services

NPTC Trained - Fully Insured - Public Liability

For further information or a free quotation

Please Contact

John 07768 894043 or Henry 07807 892510

Charlotte Steel VTCT, IIHHT, Member of FHT Complementary Therapist

The Chapel, Church Street, Bowerchalke, Salisbury SP5 5AY

Tel: 01722 780107 Mobile 07811 944328, email

cjsteel92@gmail.com

Hot Stone Massage: Full Body (90 minutes) £60, Back (1 hour) £49

Aromatherapy/Swedish Massage: Full Body (90 mins) £55,

Back (1 hour) £42

Reflexology: Initial Consultation £38, Further Treatments £33

Facials: (including 15-minute back massage, 75 mins) £60

Peaceful therapy room with plenty of parking

Gift Vouchers Available



Lending with Heart and Mind

**Wiltshire Council fund a not-for-profit
loan scheme for homeowners and landlords*.**

**We understand the expense of maintaining your home and we work with
you to take the stress out of funding repairs, improvements or adaptations.**

We see you as an individual, not a credit score. Our knowledgeable team of advisers
will guide you through the process of applying for a home improvement loan.

For a no-obligation assessment or more information
visit www.lendology.org.uk or call 01823 461099

Heatherton Park Studios, Bradford on Tone, Taunton, TA4 1EU

*subject to eligibility

LITTLE BANKSIDE

www.littlebankside.co.uk

Do you need extra space for visiting family & friends?
Self contained studio holiday let for 2 in Bishopstone.

Contact:
Hilary King
littlebankside@gmail.com
01722 780017

Matthew Veale

Mobile Hairdresser Available 6 days per week

Reliable friendly service London Toni & Guy trained

Please call 01722 336821 or 07788 686829

SELF STORAGE FACILITY



Safe, secure & convenient

Self-storage units for domestic or business use

All sizes available

On the A354 near Sixpenny Handley

Phone David 07971 869372 or Steph 07748 925810

01725 552557

Or email: info@dorsetandwiltsstorage.co.uk

www.dorsetandwiltsstorage.co.uk



LOOKING FOR A JOB?

*A few hours a week
or a bit more.*

*We often need extra bar staff,
KPs and cleaners.*

*Give us a ring and see if we
have a vacancy...*

01722 780344

& speak to Chloe

The Queen's Head, Broad Chalke



Yoga

SUNDAY MORNINGS

STUDY AND PRACTICE

at
Sixpenny Handley Village Hall

9.15am-12.30pm

6th March

3rd April

8th May

12th June

10th July

Deepen your knowledge of yoga and enhance your practice. Give yourself time to experience and understand yoga more fully to bring greater benefit to your body and mind.

ALL ABILITIES ARE WELCOME

contact Caroline Wilkinson • **01725 552209**
cj@wilkinsonyoga.co.uk • www.wilkinsonyoga.co.uk

BRITISH WHEEL OF YOGA TEACHER for over 20 years

Robin Higdon

Your local garage

Car repair, maintenance and pre-MOT preparation for all makes of car.

The Unit, Croucheston Farm, Bishopstone.
Phone: 01722 780606

Comfortable and cosy self-contained accommodation.

Little Bridge Studio

Bishopstone

Sleeps 3 plus cot.

Large open planned living space with wood burning stove.

Shower room and separate bathroom.

Contact: Alice Lyons - 01722 781137 or 07811455756



MADDY'S MENDING
*ALL ALTERATIONS AND MENDING, FROM
BUTTONS TO BLINDS, CURTAINS TO CUSHIONS*
No Job Too Small!!!
CALL MADDY ON: 01725 519504 OR
0777 4207 423
FREE COLLECTION AND DELIVERY



Fused glass classes at Sunflower Glass Studios, Broad Chalke



I am offering 3 hour classes so you can design and make a gift for a special person or something for yourself.

- No experience needed
- Maximum of 3 adults per class (children welcome but must be accompanied by an adult and only by special arrangement)
- £40 per person per session which includes all tuition, materials and refreshments
- Dates available: 12th March, 26th March, 9th April, 23rd April
- Gift vouchers available

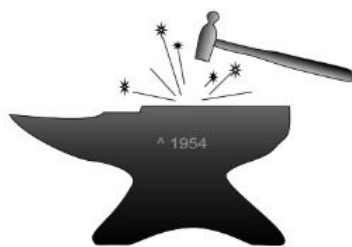
For more information contact Sara on 07711 562384 or email: sara@moss1.me.uk

METAL ARTWORK

BLACKSMITHS & GENERAL ENGINEERS

01722 781212

www.metal-artwork.co.uk



Pregnant?

Looking for evidenced-based childbirth education?
Considering having an extra birth partner?

A doula can...

- Stay with you throughout labour and birth to help you achieve your specific choices
- Offer 1:1 breastfeeding and general feeding support
- Provide help at home for those first few days and weeks after birth

Doula Cally Edwards offers emotional and physical support to help you truly enjoy your pregnancy, birth and early days with your new baby



www.callyedwards.com

   @doulacally

JAZZ LATIN & POP PIANO

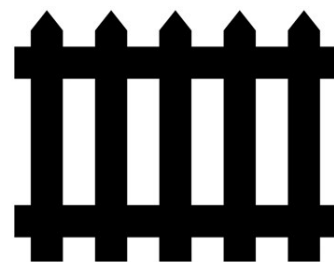
Lessons for beginners
to the more
experienced.

Informal or working
towards grades.

Contact: **Kristal Bennett B.Ed
Hons (London trained).**

**01722 780565 Bishopstone
krystal.magick7@gmail.com**

Ebble Fencing



- **Bespoke Fences and Gates**
- **Professional Service**
- **20+ Years Experience**
- **Fully Insured**
- **Free Quotations**

07789 707959

www.ebblefencing.com

evolve

TREE SERVICES

call Stuart Larter for a free quote

07563 645043
01747 871753



Tree Specialist,
Fully Qualified and Insured

www.evolveetree.co.uk

Jennie Gilbert – Pottery

I make Stoneware pots for the home. Perfect presents for you or your friends. You're very welcome to come and visit the workshop.

I also run 2 day pottery courses, please call or email for details.

4 St. Martin's Workshops
Manor Farm
Fifield Bavant
Broad Chalke
Salisbury
SP5 5HT

01722 780402

www.jenniegilbert.com

jennie.gilbert@yahoo.co.uk



BONALLACK & BISHOP
SOLICITORS

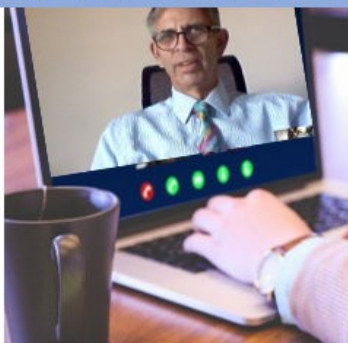
**Worried about a Divorce or
Relationship Breakdown?**

Social distancing means it's unlikely you can see your Solicitor face-to-face. But our Family Solicitors have the answer.

FREE 30 MINUTE VIDEO CALL

With Din Printer
and his Family
team.

Call 01722 422300
or email to book
your slot.



www.bishopslaw.co.uk
enquiries@bishopslaw.com



Boiler Servicing & Maintenance

- Breakdowns - Repairs - Oil - Gas
- LPG -

Mark Benfield

01747 828689 or 07974 249287

mark@mabheatingservices.co.uk

Pod & Pip

Workshop Open

Wednesdays 10-2pm

Thursdays and Fridays 10-4pm

Saturday 930-1230

Fresh Flowers, Plants, Cards, Candles & Gifts

Pre-ordered bouquets for local
delivery/collection

Flower Workshops, Wedding & Funeral
Flowers

Ebble House, Stratford Tony 07766775869

www.podandpip.co.uk

Kevin Knight Clock & Watch Repairs

Free estimates given

Over 30 years experience

Tel 01722 331969

Mob 07900 928451

Email:

kevindavidknight@gmail.com

HIGH SPEC WINDOW CLEANING

Other Cleaning Services Include:

- Gutters
- Driveways
- Conservatories
- Greenhouses
- Solar Panels
- Fascias
- Patios
- Walls
- Cladding
- Paths

T: 01425 650894

M: 07879 426914

www.hs-cleaning.co.uk

Tim Saunders Plumbing & Tiling Services

Complete Kitchens, Bathrooms & Wet rooms
Tanks, Cylinders, Pumps, Valves & Radiators
Taps, Basins, & Toilets

Unvented hot water system installation, repair
& servicing (G3 certificated)

Stuart Turner approved installer

Disabled/assisted living zero vat
installations/conversions

Wall & floor tiling

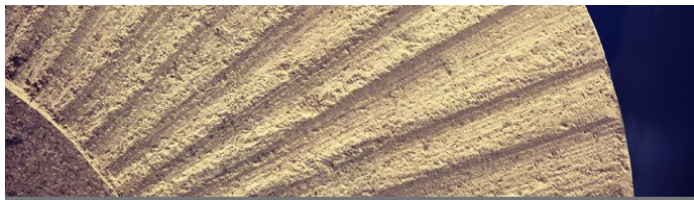
Free advice and estimates

Emergency repairs. No call out fees

Fully insured

07772 610190

Email: timsaundersps@gmail.com



GRAY'S BESPOKE STONE MEMORIALS CARVING & STUDIO INSCRIPTIONS

Creating memorials of
celebration and commemoration

for more information visit:

www.grays-stone-carving.co.uk

or call tel: 07766464048

Unit 2 Knowle Farm, Bowerchalke, SP5 5BP

POSSIBLE HOUSE EXCHANGE?

After ten happy years in Devon we have decided to come back to the area where we had a house for twenty nine years.

With the market as crazy as it is we wondered if there was anyone in the valley who, like us, was finding it easy to sell but hard to buy.

A comfortable home, garden and garage in Bishopstone, the Chalke Valley or Coombe Bissett wanted by couple no longer able to sustain 'the good life' in West Devon. We have a large five bedroomed farmhouse with paddocks and many amenities. Business potential. Financial arrangements to be agreed. If interested for further details please phone Elizabeth on 01837 657424.

2022 Advertising rates – based on A5 page

Prices below are per year: 10 editions (Aug/Sept & Dec/Jan are joint editions)

Full page 13x19cm £110 per annum	Half page 13x9.5cm £60 per annum	Quarter page Portrait 6.5x9.5cm £30 per annum	Quarter page Landscape 13x5cm £30 per annum
--	--	---	--

How to place your ad in STaB

1. Make a .pdf, .jpeg, or Word file of your ad, making sure it is the correct size for publication (see table above) and that it will reproduce well in black and white.

We cannot design or make advertisements for you.

2. E-mail the file to Sarah Brough (stabads@outlook.com), stating which of the above sizes you would like.
3. The deadline for publication is the 15th of each month.
4. When you have placed your order, you will receive an invoice with details of payment by cheque or bank transfer.
5. The Editor reserves the right to edit all contributions.

Occasional/one-off advertisements can be paid for at a rate of 1/10th of the annual rate per issue plus 10%. Advertisements placed later in the calendar year for the remaining months will not incur the additional 10% charge.

Donations are also always welcome.

BISHOPSTONE PARISH COUNCIL

Councillors	Telephone
John Gibbon (Chairman)	01722 718551
Ali Thorne (Vice Chairman)	07768514133
Norman Barter	01722 780471
Anita Smith	01722 781213
Piers Edwards	01722 780079
Michelle Tatner	07968 842525
Simon Williams	01722 780905
Parish Clerk	
Mike Ash Lower Thatch Flamstone Street Bishopstone SP5 4BZ	01722 781044 bishopstoneclerk@btinternet.com
Further information is on the village website: www.bishopstone-salisbury.co.uk	

THE VILLAGE HALL COMMITTEE MEMBERS

Chairman - Norman Barter	780471
Treasurer - Francis Taylor	780316
Entertainments - Sue Taylor	780316
Event bookings - Caroline Ash	781044
Hall bookings - Margaret Barter	780471
Hall maintenance - Nigel Peasley	780713
Minute secretary - Virginia Middleton-Smith	780444
Members: Kathy Hales and Steve Tatner	

The Village Hall is an important resource and offers a venue for a wide variety of events for the benefit of all. The Hall is supported by a large group of dedicated local people in addition to the Committee. We hope you will support events whenever you can and if you would like to join the wider group of Friends of the Village Hall then please contact any member of the committee.

Bishopstone Village Website

www.bishopstone-salisbury.co.uk

The village website carries a wealth of information about Bishopstone. There are pages devoted to the church, the Parish Council, what's on at the Village Hall, meetings, clubs, local organisations and village walks. There are even digital copies of this magazine.

If you want to have any information included on the website please contact either

Mike Ash (bishopstoneclerk@btinternet.com)

Or Roger Stockton (rogerstockton@icloud.com)

Letters to the Editor

Letters to STaB are very welcome, but the views expressed may not be those of the editorial team or the Parish Church Council.

STORM EUNICE

As usual I feel so grateful and lucky to live in this wonderful village. Whilst many of us were inside our homes in the warm some were out in the winds clearing branches and trees.

Many, many thanks to:

Piers and Caspar Edwards

John Thorne

Michael Pratt

Rob

We are all extremely grateful,

Alix Ricketts

STaB Selling Spot posts are now free of charge for those who live in the Parish. Let us know if you have anything to sell!

Mystery Objects!



I am delighted to report that we now have answers to the identity of both our mystery objects! The heavy metal object discovered in Broadchalke, the photo of which (top left) was submitted by Catherine Sharpless, is part of a steering joint, either a track rod arm or a drag arm (the other part which would come out of the side has broken off), likely from a Land Rover or tractor, but a vehicle for certain. Thanks to Scott and Dominique Prince for this information (Scott was a mechanic).

The object discovered in the field next to Bramley Cottage by my friend with her metal detector (bottom left) is a Fleam, used by a vet. In nineteenth century veterinary practice, the bloodstick would be used to strike the fleam into the jugular veins of animals to drain their blood. This procedure was known as bloodletting. It was believed that by removing excess harmful 'humours' in this way, the body would be restored to balance and health. An example in rather better condition is pictured on the right.

Further submissions of mystery objects would be most welcome!



Kate Pendlenton

Answer to the question in Sarah's Gardening Tips: Idaho



Services in Chalke Valley Benefice – March 2022

BCP = Book of Common Prayer (Traditional Language), CW = Common Worship (Contemporary Language)



Pattern of services during Covid 19 restrictions.

Please follow all the safety rules in church. If the situation changes, services may be cancelled at short notice. Please check your church noticeboard and weekly e-bulletin.

2 March ASH WEDNESDAY	12.15pm	Communion with Ashing (CW)	Broad Chalke	Catherine Blundell
	7.00pm	Communion with Ashing (CW)	Coombe Bissett	Jenny Taylor
6 March 1st Sunday of Lent	9.30am	Parish Communion (CW)	Broad Chalke	Catherine Blundell
	9.30am	Parish Communion (CW)	Britford	Jenny Taylor
	11.00am	Family Communion (CW)	Ebbesbourne Wake	Catherine Blundell
	11.00am	Family Communion (CW)	Coombe Bissett	Jenny Taylor
	11.00am	Family Service (CW)	Odstock	Adrian Taylor
	11.00am	Morning Prayer (BCP)	Berwick St John	Lay Led
9 March	12.15pm	Lenten Communion (CW)	Alvediston	Catherine Blundell
13 March 2nd Sunday of Lent	9.30am	Parish Communion (CW)	Bowerchalke	Catherine Blundell
	9.30am	Family Communion (CW)	Nunton	Roger Leake
	11.00am	Morning Prayer (BCP)	Charlton All Saints	Rhoderick Voremberg
	11.00am	Family Communion (CW)	Coombe Bissett	Jenny Taylor
	11.00am	All Age Service	Alvediston	Biddy Trahair
	3.00pm	Evening Prayer (BCP)	Fifield Bavant	Biddy Trahair
16 March	12.15pm	Lenten Communion (CW)	Bowerchalke	Catherine Blundell
20 March 3rd Sunday of Lent	8.00am	Holy Communion (BCP)	Bowerchalke	Catherine Blundell
	9.30am	Parish Communion (CW)	Bishopstone	Jenny Taylor
	9.30am	Parish Communion (CW)	Odstock	Catherine Blundell
	9.45am	REFRESH!	Broad Chalke V Hall	Lay Led
	11.00am	Morning Prayer (BCP)	Ebbesbourne Wake	Biddy Trahair
	11.00am	Parish Communion (CW)	Homington	Roger Leake
23 March	12.15pm	Lenten Communion (CW)	Bishopstone	Jenny Taylor
27 March MOTHERING SUNDAY <i>BST Begins</i> <i>Clocks go forward</i> <i>1 hour</i>	9.00am	Holy Communion (BCP)	Berwick St John	Kate Rosslyn Smith
	9.30am	Parish Communion (CW)	Charlton All Saints	Roger Leake
	9.30am	Family Communion (CW)	Broad Chalke	Catherine Blundell
	11.00am	Family Service	Nunton	Adrian Taylor
	11.00am	Parish Communion (CW)	Bishopstone	Jenny Taylor
	11.00am	Holy Communion (BCP)	Alvediston	Catherine Blundell
	11.00am	Morning Prayer (BCP)	Homington	Roger Leake
	6.00pm	Evening Prayer (BCP)	Bowerchalke	Lay Led
30 March	12.15pm	Lenten Communion (CW)	Homington	Jenny Taylor
3 April 5th Sunday of Lent	9.30am	Parish Communion (CW)	Broad Chalke	Catherine Blundell
	9.30am	Parish Communion (CW)	Britford	Jenny Taylor
	11.00am	Family Communion (CW)	Ebbesbourne Wake	Catherine Blundell
	11.00am	Family Communion (CW)	Coombe Bissett	Jenny Taylor
	11.00am	Family Service (CW)	Odstock	Adrian Taylor
	11.00am	Morning Prayer (BCP)	Berwick St John	Lay Led
6 April	12.15pm	Lenten Communion (CW)	Odstock	Roger Leake

Ministry Team:

Team Rector ~ The Revd Catherine Blundell: 01722 780134
 Team Vicar ~ The Revd Canon Jenny Taylor: 01722 503081, Curate ~ The Revd Roger Leake: 07947149456
 Licensed Lay Minister ~ Mr David Blundell: 01722 780134
 Team Administrator ~ Mrs Emily Broomhead: 07890 262376
 URC Ministers ~ The Revds Ana & Tod Gobleddale 01722 330980, The Revd Jackie Lowe: 01722 780008

Assisting Ministers:

The Revd Canon Anthony Hawley: 01794 390607, The Revd Canon Tony Monds: 01722 420942
 The Revd Canon Ann Philp: 01722 555178, The Revd Kate Rosslyn Smith: 01722 780011

Lay Worship Leaders:

Yvonne & Kevin Follett: 01747 828785, Caroline Lamb: 01722 780789, Sally Leaver: 01722 780447,
 Naomi Martin: 07713031774, Don Morgan: 01722 718557, Adrian Taylor: 01722 325862, Gill Riley: 01722 780538, Janet Roe: 01725 519242,
 Biddy Trahair: 01722 780666, Rhoderick Voremberg: 07785 304142, James Wardroper: 01722 718152

If there are any problems with the delivery of STaB please contact Sue Porter on porter1totalserve@gmail.com or 01722 780459.